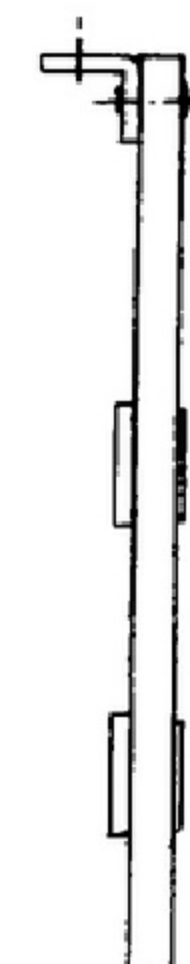
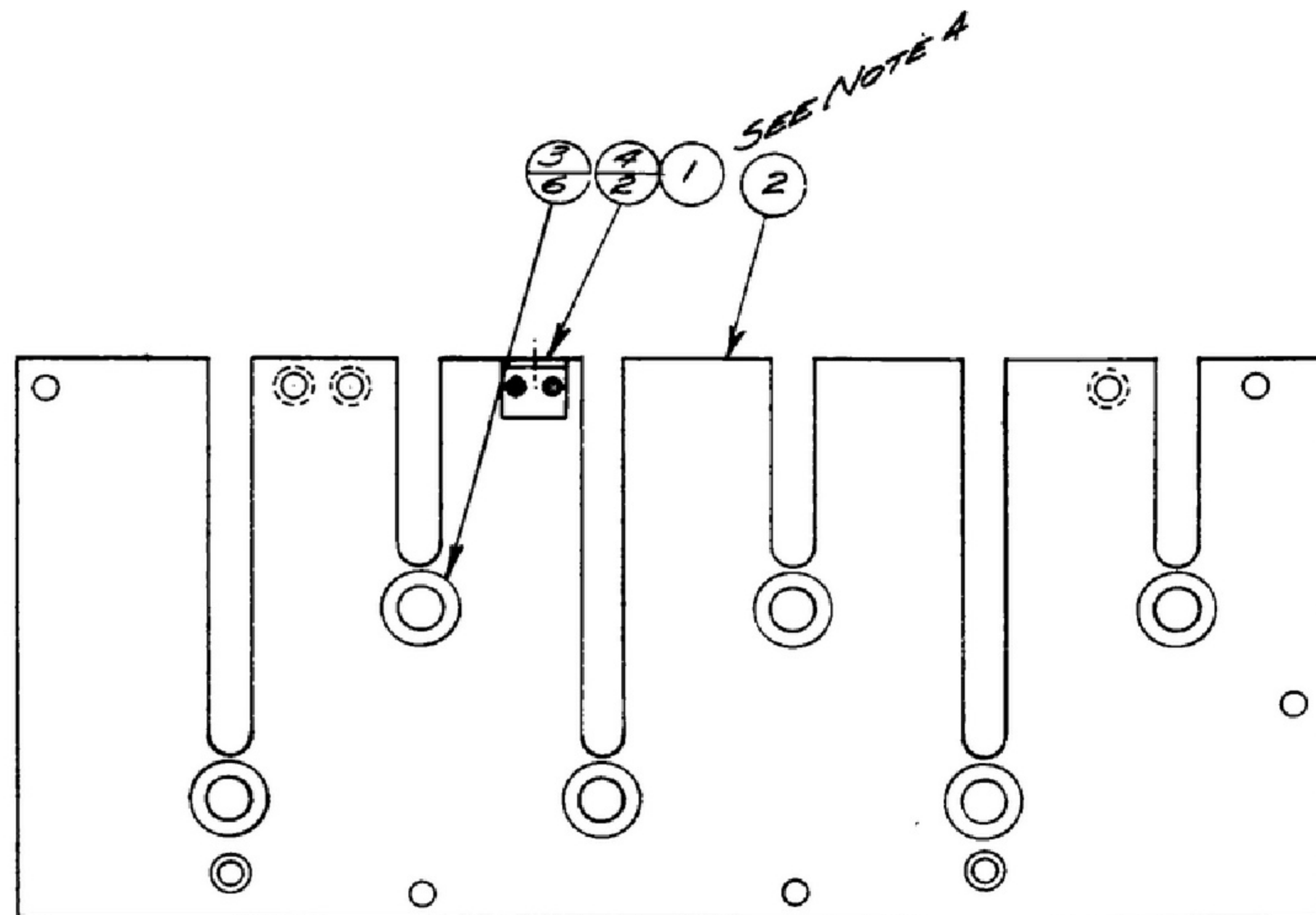


NOTICE: WHEN GOVERNMENT DRAWINGS, SPECIFICATIONS, OR OTHER DATA ARE USED FOR ANY PURPOSE OTHER THAN IN CONNECTION WITH A DEFINITELY RELATED GOVERNMENT PROCUREMENT OPERATION, THE UNITED STATES GOVERNMENT THEREBY INCURS NO RESPONSIBILITY AND ANY OBLIGATION WHATSOEVER; AND THE FACT THAT THE GOVERNMENT MAY HAVE FORMULATED, FURNISHED, OR IN ANY WAY SUPPLIED THE SAID DRAWINGS, SPECIFICATIONS, OR OTHER DATA IS NOT TO BE REGARDED BY REPLICATOR OR OTHERWISE AS IN ANY MANNER ENDORSING THE RESULTS OR ANY OTHER PERSON OR CORPORATION, OR CONVEYING ANY RIGHTS OR PRIVILEGES TO MANUFACTURE, USE, OR SELL ANY PATENTED INVENTION THAT MAY IN ANY WAY BE RELATED THERETO.

THIS DOCUMENT HAS BEEN FURNISHED BY THE GOVERNMENT AND MAY BE REPRODUCED AND USED IN CONNECTION WITH ANY GOVERNMENT PROCUREMENT OR MAINTENANCE OPERATION.

*FOR INFORMATION ONLY. CONTRACTOR MAY AT HIS OPTION DEVIATE FROM THESE PROCESS DETAILS.

REVISIONS			
SYM	DESCRIPTION	DATE	APPROVAL



NOTES:

1. SLOTS TO BE .265 \pm .002 AFTER ASSEMBLY.
2. PRESS BEARINGS (3) INTO PLATE (2) FROM SIDE SHOWN.
3. BURNISH BEARINGS TO .2500 \pm .0005 DIA.
4. RIVET HEAD (4) TO BE OPPOSITE SIDE FROM BRACKET (1)
5. SECURE BRACKET (1) TO PLATE (2) USING RIVETS (4)
6. PLATE TO BE FLAT WITHIN .020 T.I.R.
7. IN ALL SPLIT BALLOONS TOP FIGURE IS MATERIAL LIST ITEM INDICATOR & BOTTOM FIGURE IS QUANTITY.

COLLING PART NO.	ITEM	REQD	PART NO.	DESCRIPTION	MATL	MATL SPEC
3050108-00	4	2	AN456AD3-6	RIVET		
558-0241002	3	6	SM-B-283157	BEARING		
558-0327-003	2	1	SM-C-248978	PLATE-CAM		
558-0325-002	1	1	SM-B-248976	BRACKET-DUST COVER		

LIST OF MATERIAL

COLLING PART NO. 558-0329-003

COLLING NO.	QTY	NEXT ARMY	USED ON
558-0324-004	1	SM-D-248975	SG-DL-248775

DRAWN: R.E.R. CHECKED: AL APPROVED: [Signature]

UNLESS OTHERWISE SPECIFIED:
 DECIMAL DIMENSIONS INCLUDING HOLE SIZES MAY VARY \pm .005
 FRACTIONAL DIMENSIONS INCLUDING HOLE SIZES MAY VARY \pm 1/64
 MACHINED ANGLES MAY VARY \pm .1°
 SHEARED ANGLES MAY VARY \pm .25°
 BROKEN ANGLES MAY VARY \pm .1°
 ECCENTRICITY BETWEEN ANY DIAMETERS ON THE SAME CENTERLINE SHALL NOT EXCEED .010 TOTAL INDICATOR READING.
 ALL DIMENSIONS ARE FINISH DIMENSIONS INCLUDING APPLIED FINISH AND ARE GIVEN IN INCHES.

—COLLING-RADIO-CO.—
 —CERAM-RANGES, INC.—
 14214-PH-51-93
 SIGNAL CORPS
 REVIEWED: PME
 APPROVED: HLY
 DATE: 28 DEC 55

PLATE ASSY-CAM
 SCALE: 1/1

DEPARTMENT OF THE ARMY
 SIGNAL CORPS ENGINEERING LABORATORIES
 FORT MONMOUTH NEW JERSEY
 SM-C-248980